

OUR SAVIOR LUTHERAN CHURCH

EVANGELICAL LUTHERAN CHURCH IN AMERICA

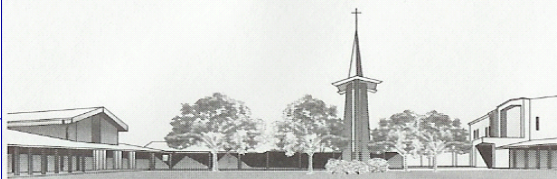


Volume XXVII, Issue 2

February 2012

Inside this issue:

Classes!	2
Reading/Kid's Club	2
Women of ELCA	2
Square Dance	2
Finance Report	3
Jottings from Janet	3
HOMBRES	3
Gospel Jam	4
Sharing & Caring	4
Lutefisk	4



Our Savior Lutheran Church Living Faith Center

WORSHIP WITH US

Traditional Worship 8:00 & 9:30 AM

Sunday School Classes 9:30 AM

Adult Class 9:30 AM

Praise Worship 11:00 AM

Communion is served the 1st & 3rd Sunday at Traditional and every Sunday at Contemporary.



Lenten Worship

Ash Wednesday, Feb. 22

12 noon and 6:15 p.m.

Wednesdays, Feb. 29, and Mar. 7-28

5:30 p.m. Lenten Meal

6:15 p.m. Lenten Worship

Join us for *The Trials of Jesus: The Voices of the Prosecution.*

OUR SAVIOR LUTHERAN STAFF

MINISTERS	ALL PEOPLE OF OSLC
PASTOR	STEVEN HERZBERG
ASSOCIATE IN MINISTRY	JANET WEST
OFFICE MANAGER	SUE WADGYMAR
CHOIR DIRECTOR/PIANIST	LINDA TODD
YOUTH DIRECTOR	DAWN EVERSON

COUNCIL MEMBERS

PRESIDENT	RUDY LOSOYA
VICE PRESIDENT	BASE HUSTON
TREASURER	TOM RIESTERER
BORDER MISSIONS	WENDY FOWLER
FELLOWSHIP	PHYLLIS YARDLEY
OUTREACH	VI GREENWALD
PUBLICITY	BASE HUSTON
LEARNING & YOUTH	TERRI JENSEN
	KATHY SALINAS
PROPERTY	RALLAND HARRISON
STEWARDSHIP	JANET WEST
WORSHIP & MUSIC	BETTY COOKSLEY
	CAROL TODD

(Pictures of council members are posted in the Narthex, as are copies of minutes & financial reports.)

Pastor's Notes

Greetings all,

This month I'd like to highlight our youth group LOST – Lutherans Out Seeking the Truth. My participation with the youth has waxed and waned through the six-plus years here. We've worked together with various adult volunteers who have dedicated of their time and abilities – and especially their love for young people. I'm stepping up my time with the group again and reconnecting with so many who I had in confirmation classes in the past. Unfortunately, after confirmation I usually change my interaction level with the young persons significantly – especially in the area of quality time. This sounds a little like my own struggles with time with my nuclear family. I'm looking forward to gathering once a month with the youth committee (different from the Education and Youth Comm. under the council). It is made up of four or five LOST members, a couple of

parents, Dawn Everson, and myself. We gather on the second Sunday of each month after contemporary worship to plan and strategize. We have moved to one monthly group gathering of all the youth from two gatherings in the past. The reason for that is to put more time into what we do at that monthly gathering. In general, the monthly gatherings will consist of group games, a presentation, small-group discussion, and worship. With the National Youth Gathering coming up in July in New Orleans, we have extra time that needs to be devoted to a few fundraisers. We are still short in our goals for that trip. At present, we are taking 15 youth and 4 adult sponsors. From three years ago, we are estimating \$800 per person for the trip. Persons have already put in \$100 each, and we hope they will not have to put in a lot more after the fundraising is done. The Lutefisk Dinner on Feb. 4th is our most productive of the fundraisers. If you haven't

bought a ticket and don't like Lutefisk, there are a lot of meatballs to be consumed. Following that, we will have a Square-dancing event on Sunday, Feb. 26, from 3 – 5 pm in the gym. It will be a free-will offering and a lot of fun for all ages. I personally haven't tried square-dancing since I was in Seminary back in the late 70's. The third-planned fundraiser will be a biscuit/sausage breakfast on Sunday morning, March 4. We may need fundraisers beyond that unless your participation and donations are so significant that no more will be necessary. On Super Bowl Sunday, Feb. 5, LOST members will be doing their annual Souper Bowl bucket collections to donate funds to a local charity. It is customary to set aside \$1 each for that collection, but obviously more can be put in the buckets. Our youth are not just our future. They are our present. I need to be reminded of that every so often. Talk with them. Notice them. Encourage them. Their world is very different from the world we grew up in. The influences away from God's Kingdom are so much stronger than they were in our days. They need our (my) companionship, and we need theirs. And we all need God to walk beside, in front of, and behind us. Pastor Steve, Home phone 956-631-0273



REMEMBER IN YOUR PRAYERS

Healing: Bob & Carol Bitner, Nelda Eason, Verena Hall, Zachary Hoffmann, Brent Jackson, Robert Jackson, Doug & Mace Magnusson, Kellie Meyers, Bob Moon, Burnie Olson, Bob & Pat Phillips, Savannah Schlaefer, Kelli Travers., Marilyn Workman

Family Members: Norma Bilunas, Bob & Lorna Rainey.

Friends of Congregation: LaRue Beasley, Paul Cortez, Jerry Groom, Leroy Hedberg, Wyatt Anthony Kamp, Joan King, Todd Krantz, Jim Laing, Elva Michal, Farrah Mumma, Audrey Rickman, Bob Shaffer, Michael Travers, King Turner, Matthew VanRoekel, Cisco Villa, Mary Whitney, Jarred Yeager. **In military**

service: Johnny Cannon (Tom Riesterer's grandson), Cody Crumpler (relative of the Todd's), Justin Garcia, Harry Hanson, Brian Hovland, Bryan Phillips (Esther Olsen's grandson), Ramiro Sandoval (Burnhams' son); Brian Ruiz (cousin of Ruiz family), Michael Sanchez (Carol Todd's son), Matthew Sandford.

For the Family and Friends Mary Hill, who passed from life through death to life eternal on 12/29/11.

Bible Classes for Everyone

SUNDAY SCHOOL CLASSES: 9:30 am in the LFC!

SUNDAY ADULT CLASS meets at 9:30am in Classroom C. These Bible readings will match the Sunday sermon readings. Check out the website www.elca.org/evangelizingchurch/dailydiscipleship to download the weekly study.

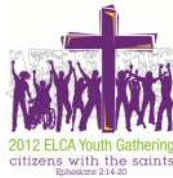
CONFIRMATION CLASS for 6th to 8th graders meets Wednesdays from 6:30-7:30pm in the Friendship Room. Beginning Feb. 22, the class will meet at 7:00pm for Lent.

WEDNESDAY EVENING ADULT BIBLE STUDY at 6:30pm in the Library. We'll begin a study of Revelation on January 4. "Is This the Time? Interpreting the Mystery of Revelation" offers an alternative to the popular visions and schemes of interpretation, presenting the book in a way designed to give people a sense of hope. On Feb. 29th, we'll begin a Lenten Study.

THURSDAY MORNING BIBLE STUDY: "The Greatest Story: Jesus". This is for all who want to encounter the Jesus of the 4 Gospels and see how his story connects to our stories. We walk the journey from Jesus' birth, through his brilliant ministry, along the dark path of trials and crucifixion, and into the bright light of Easter morning. Join Pastor Steve in the Parish Hall.

THE LEARNING COMMITTEE will meet Thursday, Feb. 2 at 6:30pm in the Friendship Room.

SQUARE DANCE!!



That's right—the LOST Youth Group will sponsor a Square Dance on Sunday, February 26 from 3:00-5:00pm in the Living Faith Center. Dance the afternoon away with a professional caller, enjoy some refreshments, and help our Youth raise funds for the National Youth Gathering to be held in New Orleans in July of 2012. A free will offering will be accepted.



New ceiling tile, new insulation, and new paint! The Parish Hall kitchen gets an upgrade. Thanks go to our faithful helpers! Cupboards are next.



SERVICE OF HEALING

Thursday, February 16 at 6:30pm for all those in need of healing and comfort.

READING CLUB: We'll meet Wednesdays at 5:30 pm in the Living Faith Center (except the 8th which is Kid's Club). Questions? Please talk to Tonia (631-0273).

KID'S CLUB! Kid's Club is a fun night for kids to come hang out with caring teachers and parents. Kids experience a theme oriented evening with crafts, games, Bible stories, and snacks. Kid's Club is from 6:30—8 :00 PM and is open to all children from PreK (age 4) to 5th grade. Please note any food allergies on our permission form. On February 8—Shine Your Light!

OSLC Food Ministry

Our ministry is continuing to give \$25 food cards to families in need. If you would like to donate, please mark your check "Food ministry". Food cards are usually given on the 4th Sundays of each month. We are currently helping 5 families in our congregation. Thank you for your generosity.

RIO GRANDE VALLEY WOMEN OF THE ELCA SPRING CONFERENCE

"Woman Acting Boldly for Peace"

Saturday, February 4th at Love of Christ Lutheran, 300 S. Border Ave in Weslaco. Registration \$8. Coffee 8:30—9:00 a.m. Noon luncheon. Ladies please wear RED in honor of women's heart health. The monetary offering will go to Runn School children, Donna, TX. Bring children's underwear and socks, Kinder -5th grade sizes. Register by Mon, Jan. 23. Please sign up in the Narthex.



Jottings from Janet:

As I sit to write this I am reminded that February is the month for LOVE and we all need to love as we have been loved by Him. My sincere thanks go to everyone who helped with the Frank Runyeon production last Saturday. Once again it was an enjoyable and thought provoking afternoon.



Our Wednesday night Bible study has begun its study of the Book of Revelation. It promises to be an enjoyable, clarifying study of this book which is often difficult for many people. All are welcome to join us.

On the second Sunday in February we will have our third annual Gospel worship service at 8:00 and 9:30 AM. As we continue to hear about the ministry of our Lord and Savior Jesus Christ we will hear music to help us understand all that He has done for us.

Our Healing Ministry continues with monthly services on the third Thursday of each month at 6:30 PM. All those in need of healing of any kind are welcome to join us for that service. Once again thanks to all our brothers and sisters who pick me up and take me home so that I am able to visit. As you all know it is a part of my ministry that I feel God has called me to do. If anyone has any need for a visit just let us know. In His name, Janet

BIRTHDAYS

- 6 Thomas Schuette
- 8 Jani Burnham
- 10 Justin Garcia
- 12 Ramiro Sandoval
- 13 Bob Bitner
- 13 Jessica Long
- 16 Barb Rush
- 18 Savannah Schlaefer
- 19 Bob Hadan
- 19 Fern Kreidler
- 20 Daniel Muerrens
- 21 Courtney Huston
- 22 Adeline Fry
- 23 Annette Neubauer
- 25 Vern Einhorn
- 25 Bob Olson
- 25 Hope Young
- 27 Kurt VonRosenberg
- 29 Carlos Wadgyamar

OSLC Dime Ministry:

Various ministries are highlighted to benefit from the dimes you donate each quarter. In 2011, for the 1st quarter, the Reading Club received \$242.69; 2nd quarter Cinderella's Closet received \$165.76; 3rd quarter Summer Music & Activities for Kids received \$148.55, and 4th quarter Piecemakers received \$447.76. For the 1st quarter of 2012, our Food Ministry will benefit. Save the dimes you receive in change and bring them to church on the last Sunday of every month.



Saturday, Feb. 25
8 am to 1 pm
in the LFC.

Clean out your closets and garages and bring the items you want to donate Tuesday to Friday, Feb. 21-24, from 4 to 7 pm. Proceeds are for Pastor's Fund to help people in need. No clothing, please.

February



ANNIVERSARIES

- 10 Ken & Karen Dreier
- 14 Roger & Jani Burnham
- 14 Branch & Amy Zuniga
- 15 Kermit & Rayoma Andrews
- 24 Hal & Dorothy Case
- 28 Del & Annette Neubauer

Treasurers Report - 2011

January-December(12 Months)

The information that follows reflects results for 2011

Income for 2011

Actual \$296,515

Budgeted \$287,127

Difference **(\$9,388)** **Income greater than planned by 3.3 %**

Expenses for 2011

Actual \$288,618

Budgeted \$286,909

Difference **(\$1,709)** **Expense about equal to budget. (.60%)**

General comments: Income

The YTD income is greater than anticipated by \$9,388 (3.3%) expenses are higher than budgeted by \$1,709 (.60%).

Income exceeded the plan because of a large contribution on Christmas. Expense was above the budget by less than 1%-effectively a tie. Mortgage Balance is now \$262,767

Thank you my friends for a good year.

Tom Riesterer, Treasurer



3rd Annual Country

Gospel Worship

Sunday, February 12
8:00 and 9:30 a.m.

Contemporary Worship 11:00 a.m.

Blood Pressure Screenings

On Sunday, Feb 12 Mary Lovig will be in the library between services to check your blood pressure. You can also stop in to browse the library and check out any book(s) you'd like to read.

HOMBRES



In February, we'll meet Thursday the 12th at 6:30pm in the home of Base Huston, 5412 N. 5th St, McAllen, 956-630-6306. Please sign up in the Narthex. All men are welcome for good food and fellowship.

SHARING AND CARING



I personally feel that this committee represents the parable of the talents. God blesses this little group which literally has no budget or proposed income with so much. This congregation and its many visitors just seem to open up their hearts and pocket books to us. That is why I feel it crucial to make the right decisions on the distributing of these blessings. We have a wonderful group of dedicated individuals that work hard and discuss our projects objectively. If you would like to join us please do so on February 6th at 6:30 in the choir room at the church. Thank you

for all the very generous help. We will deliver your contributions as follows: **February 5** will be **Peanut Butter & Tortillas** and **February 19** will be **Love the Babies**. Any food you wish to donate will be appreciated as well. You may contact Norm Frey at 701-471-9568.

PIECEMAKERS In 2011, we were again blessed with many donations of sheets and fabrics, allowing us to keep working year-round once again. Whether our attendance is large, small or somewhere between, we always manage to get our quilts made while we are enjoying fellowship together. Our total distribution figure in 2011 was 393 quilts. Donations were made to 13 schools, Salvation Army Homeless Shelter in McAllen, Cristo Rey at Las Milpas, a number of needy families, Daisy Joy Ministry, three of our own high school graduates, seven children at their baptisms and one to WELCA. We sold 5 quilts this year, which helps us out with the cost of batting. The batting is our biggest expense, amounting to approximately \$800 a year. Thanks to all who contributed to making our mission successful again this year through donations of cash, sheets, fabrics and other miscellaneous items. We especially want to thank all those who so generously volunteer their time on Tuesdays and also by doing a lot of prep work at home each week. With your help, we plan to continue using our hands to do God's work here in the RGV. We meet on Tuesdays from 9:00am to 2:30pm for fellowship and conversation, and we make quilts while we're at it. Bring your lunch and join us!



Papa John's asks the community to help us make a difference this New Year! Our locations in McAllen/Edinburg will be collecting canned goods for the local "Sharing & Caring Ministry" of Our Savior Lutheran Church in McAllen, TX from Jan.10- Feb. 10, 2012.



Every 3 cans of goods delivered to our locations, will provide you with a voucher to Bowl a Game for Free at Flamingo Bowl. For more information email: veronique956@gmail.com.



SUNDAY, FEB. 5TH

Our LOST youth group will be collecting for a local food ministry. They will join young people in churches across the country to collect money for those who are hungry and hurting. Bring your bills for their buckets! Think global, act local.

7th Annual Lutefisk Dinner!!

Saturday, Feb. 4
Tickets are still available at \$17.50.



Help wanted:
 Make meatballs,
 Thurs, Feb. 2, 9AM
 Peel potatoes,
 Fri, Feb 3, 9AM

Rosettes & Krum Kaka are also needed.

Country Gospel Jam

Feb 6 & Mar 6
2:00-4:30pm

Spread the word!



If you received this newsletter in error, please contact the church office.

This newsletter was taken to the Post Office on January 19, 2012.

DATED MATERIAL

www.oursaviormcallen.org

Email: oursaviormcallen@sbcglobal.net

Phone: 956-631-6121

U.S. POSTAGE
 PAID
 NON-PROFIT
 ORGANIZATION
 PERMIT #65

FEBRUARY 2012

**OUR SAVIOR LUTHERAN
 CHURCH
 1105 WEST FERN AVE
 McALLEN, TX 78501**

